



Air Source Heat Pump

Hydraulic Module
Heating & Cooling



Solareast Heat Pump Ltd.

Address: No.73 Defu Road, Xingtan Town, Shunde Foshan, Guangdong, China
Tel: +86 757 29380616
E-mail: heatpump@solareast.com



Website



Facebook



LinkedIn



YouTube

www.solareasthvac.com



Enhance Your Personal Energy Transition Journey

Renewable energies pave the way towards a sustainable heating solution. By opting for a heat pump, you're not just improving your personal carbon footprint but also ensuring a safe and sustainable future for your home. Thus, fostering a path towards a sustainable lifestyle today.

Enhancing your home's energy efficiency is pivotal in our fight against global climate change. There lies a considerable opportunity to diminish energy expenses and make strides in your personal energy transition. The prime energy consumer in residential buildings is the heating system, where nearly 80% of the energy used is directed towards heating and hot water.

Aim for a Long-Term Energy Solution That Won't Run Out

Enhancing your home's energy efficiency is pivotal in our fight against global climate change. There lies a considerable opportunity to diminish energy expenses and make strides in your personal energy transition. The prime energy consumer in residential buildings is the heating system, where nearly 80% of the energy used is directed towards heating and hot water.



The versions



Hydraulic Module With Water Tank

A tower with a 200/250-litre tank for everyday hot water comes with a quick-acting heat switcher connected to the outside part through water tubes. The unit is fitted with a heat switcher, expansion tank, tap for daily hot water, connection for a backup boiler, and safety valves. A full package that assures dependability and saves space.

Suitable for:

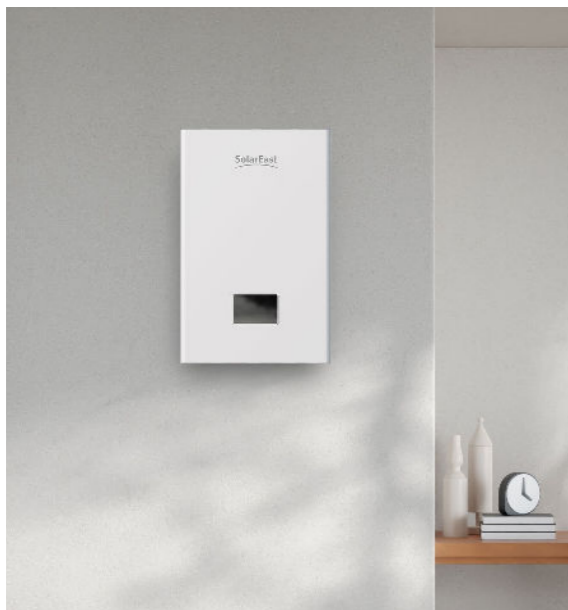
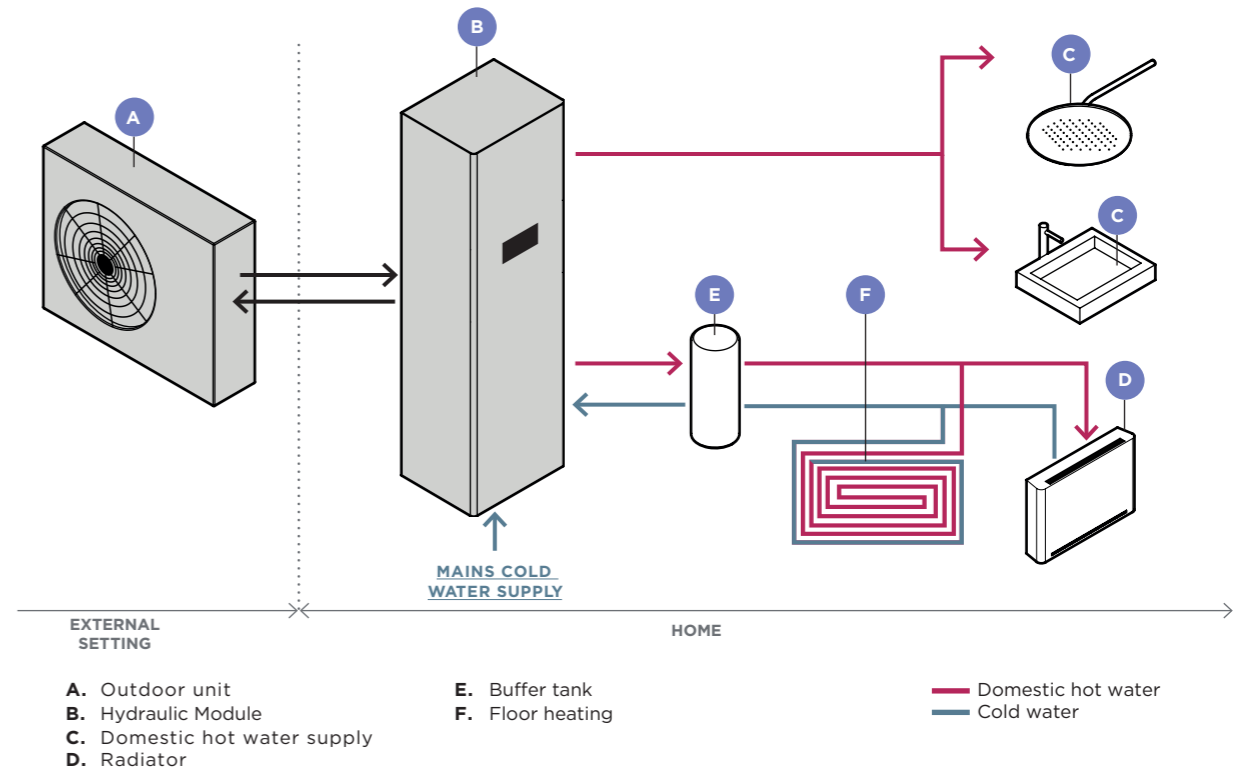


Small and medium-sized homes



Apartments

Hydraulic Module With Water Tank



Hydraulic Module Without Water Tank

Internal hydraulic module with circulation pump and heat exchanger connected to the outdoor unit via water pipes. A flexible solution is suitable for the implementation of tailor-made systems.

Suitable for:



Offices

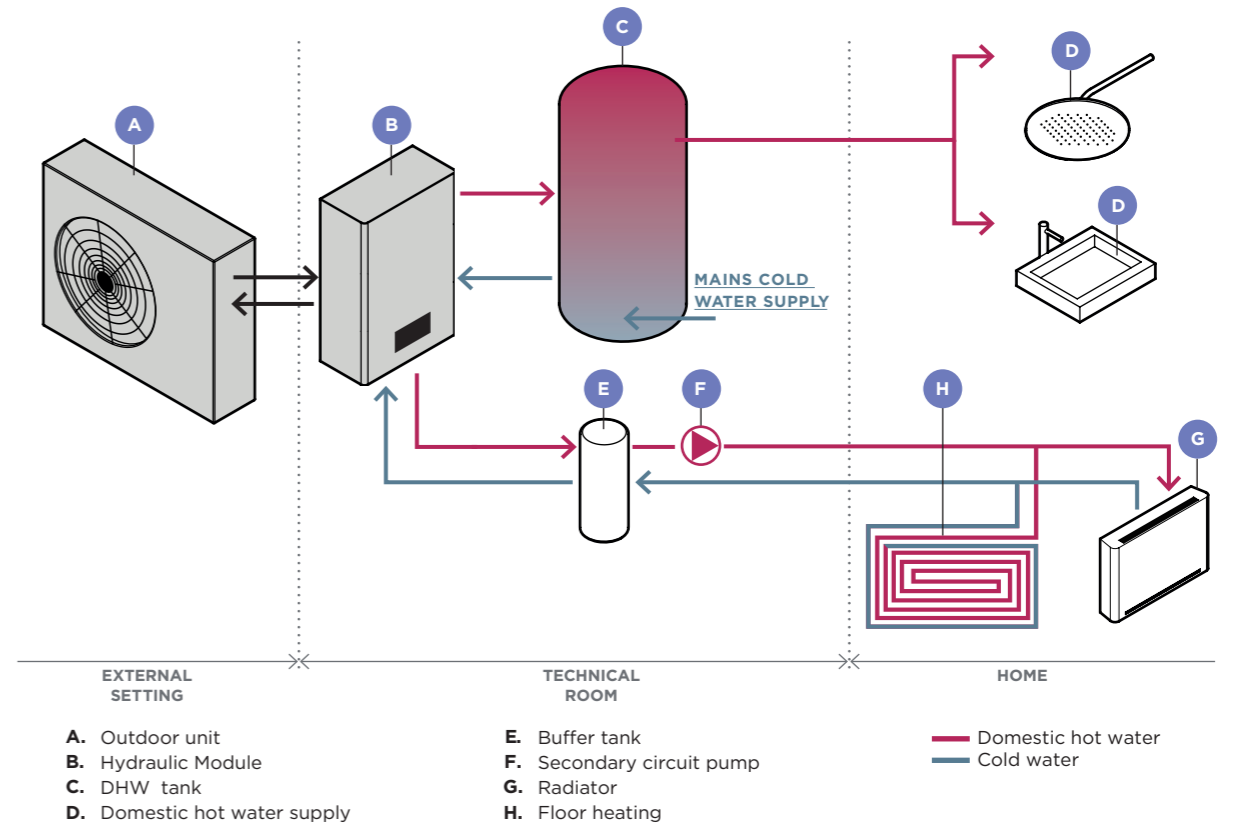


Centralised systems



Medium and large-sized homes

Hydraulic Module Without Water Tank



AIR/WATER HEAT PUMPS WITH HYDRAULIC MODULE

Highly efficient air-water heat pumps use a DC inverter and absorb energy from outdoor air to heat or cool homes and provide hot water. A smart control adjusts the water temperature quickly and accurately, reducing energy use.



APPLICATION

- Heating of new or existing homes
- Heating via radiators, fan convectors, underfloor
- Heating of domestic hot water

USER-FRIENDLY CONTROL

All menus are accessible through the color LED screen. We've organized the functions and settings on one page for simplicity.



WI-FI CONTROL

All models come standard with Wi-Fi capability, allowing for remote monitoring and adjustment of the pump's functionality with ease.

- Wi-Fi & Modbus interface as standard
- Inverter technology
- User-friendly functions
- High efficiency
- A+++ energy class
- Wide operating range



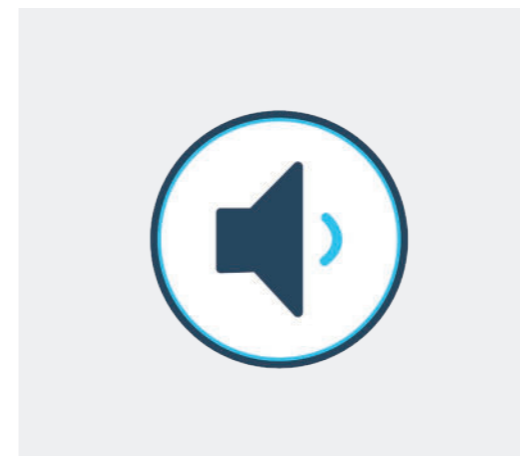
ENERGY SAVINGS

Solareast DC Inverter heat pumps offer big energy savings for both heating and creating hot water due to their high SCOP levels. When compared to regular heating systems like a boiler, the amount of energy used over a single winter could cost 30% to 50% less.



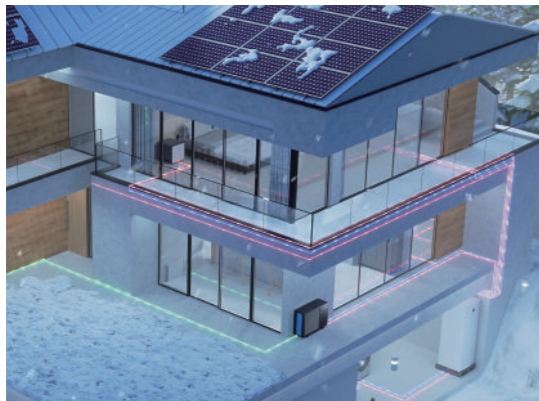
REDUCED SPACE REQUIREMENTS

Every part is built into the internal module. Solareast HYDRAULIC MODULE is a great space-saver for home use because it comes with a built-in hot water tank. Unlike usual separate installs, this all-in-one pack includes pre-set-up hydronic parts and hot water parts. This makes setup faster and frees up your living space. The Solareast HYDRAULIC MODULE is simple to run and really dependable and efficient.



ULTRA QUIET OPERATING MODE

By adjusting the power of the compressor and fan, we can reduce the noise at night or other times when it needs to be extra quiet, which can cut down the noise by half. This gives you the most comfort, with the least usage and quietest performance.



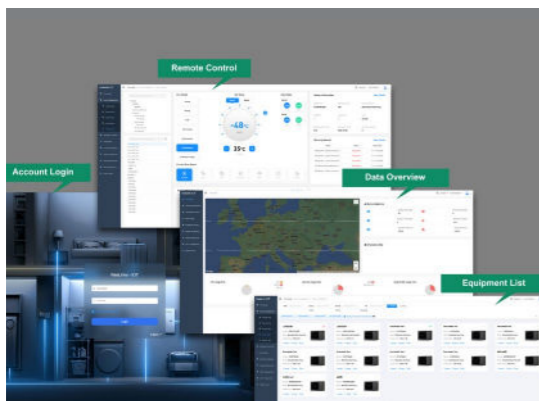
EXCLUSIVE DESIGN TO WORK IN THE MOST EXTREME CONDITIONS

This equipment can function in a broad range of outdoor temperatures: even in extreme conditions from -25°C to 45°C.



PROVEN QUALITY

Solareast heat pumps can be integrated into the smart energy grids of the future to help provide the low-cost heating systems required to meet carbon reduction targets. All heat pumps and water heaters in the European market are continuously tested by various certification schemes. These are usually the basis for qualifying for state subsidies. Solareast heat pumps meet the high standards of the following quality accreditation schemes: MCS, Keymark, and so on.



EFFICIENT IOT SOLUTION

Solareast's IoT customer management platform can effectively save labor costs for dealers. It can be connected with WIFI or DUT to realize remote monitoring of data record all the operating parameters of the units and synchronize it to the management background of dealers and manufacturers. If the heat pump has an error report, the dealer can quickly provide users with the best solutions according to this report.



TECHNICAL DATA

Hydraulic Module Without Water Tank

Model		HU-3K/6LA1	HU-9K/6LA3
Power Supply		220-240/1/50	380-415/3/50
Auxiliary heater power	kW	3	9
Power Input Max.	kW	3.2	9.2
Current Input Max.	A	15.8	16.2
Electrical Shockproof	/	I	I
IP Class	/	IPX1	IPX1
Water Piping Connections	In	G1	G1
Water Pressure Drop	kPa	10	10
Water Pressure Min/Max	MPa	0.1 / 0.3	0.1 / 0.3
Sound Pressure level	dB(A)	35	35
Net Dimensions (L*W*H)	mm	400*280*720	400*280*720
Packed Dimensions (L*W*H)	mm	466*355*862	466*355*862
Net Weight	kg	31	33
Gross Weight	kg	34	36

Hydraulic Module With Water Tank

Model		HUST-200LA1	HUST-200LA3	HUST-250LA1	HUST-250LA3
Power Supply		220-240/1/50	380-415/3/50	220-240/1/50	380-415/3/50
Auxiliary heater power	kW	3	9	3	9
Power Input Max.	kW	3.5	9.5	3.5	9.5
Current Input Max.	A	15.6	16.2	15.6	16.2
Hot Water Tank Volume	L	200	200	250	250
Electrical Shockproof	/	I	I	I	I
IP Class	/	IPX1	IPX1	IPX1	IPX1
Hot Water Piping Connections	In	G1-1/4	G1-1/4	G1-1/4	G1-1/4
Heating Water Piping Connections	In	G1	G1	G1	G1
Water Pressure Drop	kPa	10	10	10	10
Water Pressure Min/Max	MPa	0.1 / 0.3	0.1 / 0.3	0.1 / 0.3	0.1 / 0.3
Hot Water Tank Pressure Max.	MPa	0.8	0.8	0.8	0.8
Sound Pressure level	dB(A)	35	35	35	35
Heat Exchange Coil Shape	/	corrugation	corrugation	corrugation	corrugation
Heat Exchange Coil Dimensions	mm	Ø32*20000	Ø32*20000	Ø32*20000	Ø32*20000
Net Weight	kg	95	97	120	122
Gross Weight	kg	105	107	130	132

* Please refer to the nameplate for product upgrades or changes in specifications without prior notice.

