



联系我们

联系我们 Contact us

电话 /Tel:+86 13750855896

传真 /Fax:+86(0)571 86167813

邮箱 /Email: ouhuimachinery@aliyun.com

地址：杭州市石桥路 198 号浙江省农业科创园 6 号楼

Add : Building 6, Zhejiang Agricultural Science Innovation Park, No. 198, Shiqiao Rd,
Hangzhou City, Zhejiang province

杭州欧惠机械有限公司

Hangzhou Ouhui Machinery Co., Ltd.

公司简介

杭州欧惠机械有限公司座落于美丽的西子湖畔，地理位置优越，交通便利，是一家集设计研发、制造、贸易于一体的技术型企业。我们专业制造各种规格的食品型真空冷冻干燥机，干燥面积从0.5-200平方。

公司拥有食品干燥、制冷工程、电气自动化等各类专业设计工程师。凭借20多年的行业经验，我们可为客户提供果蔬、肉类、水产品、保健品、中草药等各类制品冷冻干燥的一站式解决方案。

我们秉持诚信第一，客户至上，专业一流，服务一流的经营理念。公司配备经验丰富的安装调试、操作培训等售后维护团队，让你买的放心，用的安心。我们的客户遍及亚洲、欧洲、美洲、非洲等各大州，至今已有百余台设备运行在世界各地。

ABOUT US

Hangzhou ouhui machinery co., Ltd, located near beautiful Xihu Lake with favorable geographical location and convenient transportation, is a technical manufacturer specializing in design, research, manufacturing and trading of different vacuum freeze dryers for food industry, with drying area from 0.5-200 sqm.

We have a professional experienced design engineer team in food drying, refrigeration engineering and electrical automation industry. With more than 20 years development, we are able to provide a one-stop technical solution for the freeze drying of vegetable, meat, aquatic product, health product and pharmaceutical industry.

We have been keeping the management idea of credit first and customer supreme and owned an experienced after-sale service team for the installation and operation training of machine. Nowadays our machines have been widely used in Asian, American, African and European market.

You are warmly welcome to visit our factory and hope to establish a mutual benefit commercial relationship with you soon.

荣誉证书

Certificate of honor



FD系列冷冻干燥机

FD series freeze dryer

“欧惠”提供的FD系列冷冻干燥机，为批次式冷冻干燥机；

适用于食品工厂的工业化生产；

原料由外置的专用速冻装置，预先冷冻至-18℃以下；

干燥采用辐射换热，温度均匀换热效率高；

适用于各类蔬菜、水果、肉类，各类调理食品，保健品等。

FD series freeze dryers are batch type freeze dryer, suitable for industrial production of food factories.

The raw material is pre-frozen to negative 18°C with external freezing device;

The drying procedure has adopted radiation heat transfer, with even temperature and high heat transfer efficiency;

Suitable for different vegetable, fruits, meat, various processed food and health products.

基本性能

Basic performance

加热工作温度 Heating working temperature	+15° C~+130° C
冷阱工作温度 Cold trap working temperature	-30° C~-45° C
工作真空 Working vacuum	13Pa ~260Pa
加热介质 Heating medium	去离子水 Deionized water
加热方式 Heating type	1.蒸汽加热、2.电加热 1.steam heating 2. electric heating
制冷工质 Refrigerating working medium	1.R507\R404A\R22、2.R717
制冷供液方式 Refrigerating liquid supply type	1.满液循环、2.直膨供液 1.full liquid circulation, 2. direct expansion liquid supply
冷阱工作方式 Cold trap working type	1.单冷阱、一次融冰 1.single cold trap, one time ice-melting
	2.多冷阱、交替工作+交替融冰 2.Multiple cold trap, alternative working + alternative ice-melting
真空泵组合方式 Vacuum pump combination type	1.油回转真空泵 1.oil rotary vacuum pump
	2.罗茨真空泵+螺杆干泵 2.Roots vacuum pump + dry screw vacuum pump
	3.罗茨真空泵+水环式真空泵 3. Roots vacuum pump + liquid ring vacuum pump
初期排气到达130Pa时间 Time for initial exhaust to reach to 130Pa	15分钟 15 minutes
控制方式 Control type	PLC+PC

设备特点 Machine features

通过对冷冻干燥加工过程每个工序的不断推敲和改进，“欧惠”可以为食品工厂提供最合理的冷冻干燥设计方案。

● **小型的FD冷冻干燥机及试验机(FD1、2、3、5、10、20、30、50型)采用单冷阱的水冲式融冰系统。**
在每批次干燥结束后，冷阱表面的冰层，采用热水快速融化，30分钟后冰水可排放干净，之后再转入下个批次的生产。

单冷阱融冰系统可确保设备投资费用最低。

● **大中型的FD冷冻干燥机(FD50、100、150、200型)采用多冷阱的连续式融冰系统。**

每个冷阱与干燥罐之间设有隔离阀门，融冰时依次关闭隔离阀门、采用来自负压蒸汽发生器25° C的水蒸进行化冰。融冰结束后，冷阱再次冷凝降温至工作温度，直至达到原来的工作真空度，冷阱再次转入工作状态。

采用多冷阱系统:

- (1) 冷阱冷凝能力恒定不变;
- (2) 冷阱冰层变薄，冷凝效率高，制冷能耗降低;
- (3) 干燥批次间停机时间短，生产产量提高。

多冷阱系统可确保设备运行费用最低。

With continuous refinement and improvement on each working procedure of freeze drying, we are able to provide the most suitable design solution for the freeze drying of food industry.

● **Small type FD series freeze dryers and testing machines (FD 1,2,3,5,10,20 and 50 model) has adopted single cold trap water impulse ice-melting system.**

The ice layer of cold trap surface has used hot water for melting after each batch drying finish and the next batch drying can continue 30 minutes after ice water is completely discharged.

Single cold trap ice-melting system can ensure the lowest investment cost of the machine.

● **Medium and large type FD series freeze dryers (FD50,100,150 and 200 model) has adopted continuous multiple cold trap ice-melting system;**

There is an isolating valve between cold trap and drying valve, and the valve is sequentially closed during ice-melting in which water vapor at 25 degrees from negative pressure steam generator is used. It will not come back to working status until cold trap condenses to working temperature and original working vacuum is achieved after ice-melting finish.

The advantage for using multiple cold trap system

- 1) The condensation capacity of cold trap remains constant;
- 2) Thinner ice layer of cold trap, high condensation efficiency and low refrigerating energy consumption;
- 3) Shorter downtime between drying batches and increased production output.

Multiple cold trap system can ensure the lowest operation cost of the machine.



FD-0.5m² 冷冻干燥机
FD-0.5m² Freeze dryer



FD-2m² 冷冻干燥机
FD-2m² Freeze dryer



FD-3m² 冷冻干燥机
FD-3m² Freeze dryer



FD-5m² 冷冻干燥机
FD-5m² Freeze dryer



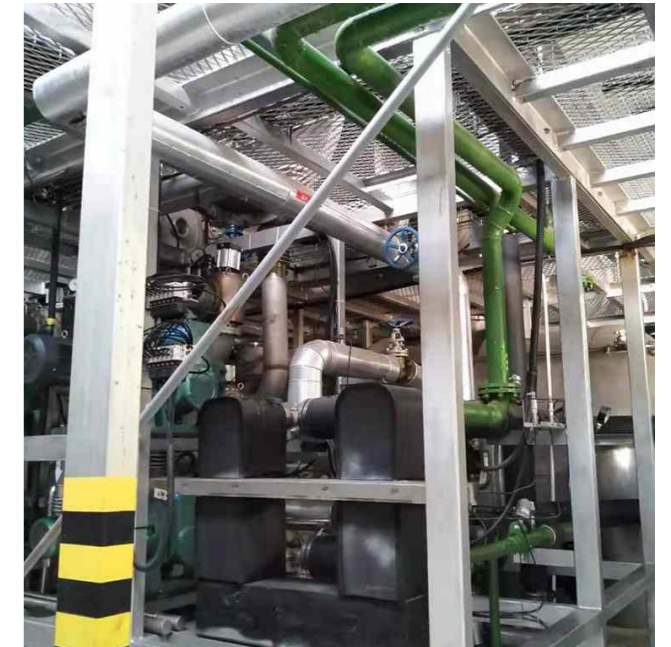
FD-7m² 冷冻干燥机
FD-7m² Freeze dryer



FD-10m² 冷冻干燥机
FD-10m² Freeze dryer



FD-50m² 冷冻干燥机
FD-50m² Freeze dryer



FD-100m² 冷冻干燥机
FD-100m² Freeze dryer



FD-20m² 冷冻干燥机
FD-20m² Freeze dryer



FD-30m² 冷冻干燥机
FD-30m² Freeze dryer



FD-125m² 冷冻干燥机
FD-125m² Freeze dryer



FD-200m² 冷冻干燥机
FD-200m² Freeze dryer



设备基本规格

Machine technical parameter

型号 Model	有效干燥面积 Effective drying area/m ²	原料装载量 Raw material loading capacity/l	脱水能力 Dehydration capacity/kg (water)/h	干燥舱尺寸 Drying container size/mm	托盘尺寸 Tray size/mm	托盘数量 Tray Qty/pc	进料方式 Feeding type	料车数量 Feeding trolley Qty	加热板层数 heating plate Qty/layer	电加热功率 Electrical heating power/kw	蒸汽耗量 0.5MPa 蒸汽耗量 KG/h	耗冷量 -35℃~+35℃ KW	压缩空气耗量 0.5MPa M ³ /min	耗水量 KG/h	设备装机功率 KW	外形尺寸 占地面积 长LX宽BX高HM External dimension/Lx W x H/m
FD-1	1.0	30	2	φ600X1100	870X390X33	3	人工装盘 Manual palletizing		3+1	2.1		1.9		3.5	7.7	2.1x2.0x1.9
FD-2	2.3	60	4	φ800X1135	870X540X33	5			5+1	4.2		3.8		3.5	10.3	2.3x2.1x2.1
FD-3	3.3	90	6	φ1000X1370		7			7+1	6.3		5.7		5	15.8	2.5x2.2x2.3
FD-5	5.6	150	10	φ1200X1470		11			11+1	10.5		9.5	0.1	5	26	4.1x2.0x2.3
FD-10	11.3	300	20	φ1800X1770		24	料车进料 Feeding with trolley	1	12+1	21		19	0.2	15	49	9X8X2.8
FD-20	22.6	600	40	φ1800X2670		48		2	12+1	42		38	0.4	225	97	9X10X3.0
FD-30	33.8	900	60	φ1800X3570		72		3	12+1		100	57	0.4	300	73	9X12X3.0
FD-50	50.7	1500	100	φ2400x3900		108		3	18+1		160	97	0.7	450	137	11X13.X3.7
FD-100	101.5	3000	200	φ2400x6600		216		6	18+1		320	193	0.9	900	255	11X16X4.1
FD-150	152.2	4500	300	φ2400x9300		324		9	18+1		480	291	0.9	1500	338	11X18X4.1
FD-200	203.0	6000	400	φ2400x12100		432		12	18+1		630	387	1.3	2200	457	11X21X4.1

配件供应商

Parts suppliers

- | | | | | |
|----------------|-------------|--------------|---------------|----------------|
| 德国比泽尔BITZER | 日本神钢KOBELCO | 美国爱默生Emerson | 丹麦格兰富Grundfos | 德国威乐WILO |
| 丹麦丹佛斯Danfoss | 美国parker | 德国久茂JUMO | 德国西门子Siemens | 法国施耐德Schneider |
| 德国海密梯克Hermetic | 日本帝国teikoku | 台湾良机LiangChi | 日本欧姆龙omron | 日本山武Azbil |
| 德国莱宝Oerlikon | 德国普旭BUSCH | | 台湾高力kaori | 台湾亚德客AirTAC |

我们的服务

Our service



严格按照国际质量体系标准实施

集设计、研发、生产、销售、安装和售后于一体

Strict implementation according to the standard of international quality system

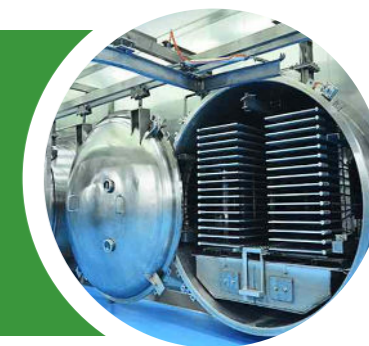
Integration of R&D, production, sales, installation and after-sale service

高品质真空冷冻干燥机

完善缜密的质量保证体系。致力于为您开发出适合您的冷冻干燥机产品研发

High quality vacuum freeze dryer

Perfect and meticulous quality assurance system and dedication to the development of suitable freeze dryer for your work



技术人员1对1跟踪服务

根据行业需求为您定制专属冷冻干燥机系统

Service engineer one to one tracking service

Customized service of freeze dryer to meet you work need

诚信经营 合理的价格 良好的售后

品质高、质量硬、服务优、口碑好、没烦恼

Honest management, reasonable price and excellent after-sale service

High quality, stable performance, excellent service, popular reputation and no concern about after-sale service





二十多年专注发展的技术实力

针对不同应用领域不断推出各型冻干机产品，各个应用机型个性化设计，解决客户冻干机适用性难题、完善的质量管理体系，我们将质量管理体系和环境管理体系应用到研发、生产、检测等各个方面，为管理提供保障，使质量体系投入、流程、产出等各个环节达到预定的质量标准多元化产品系列

Technical strength focused on development for over 20 years

With continuously launches of various freezing dryers for different application fields, the personalized design of applied models has solved the practicality problem of freeze dryer. The application of quality management system and environment management system into the research, production and inspection has safeguarded the management and made the quality system investment, procedures and output to obtain diversifying products series with a scheduled quality standard.

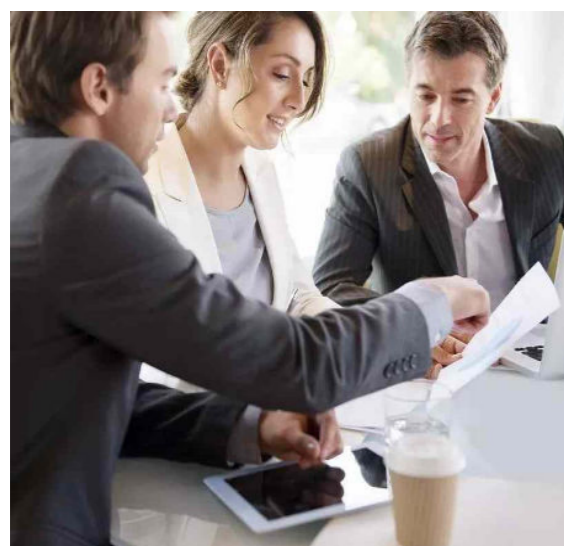


覆盖面广

各个应用机型个性化设计，解决客户冻干机适用性难题
针对不同应用领域不断推出各型冻干机产品快速反应的服务体系

Wide coverage

The personalized design of applied models has solved the practicality problem of freeze dryer. Aiming to different application fields, a rapid response service system that launch various type freeze dryers is well established and improved;



客户无忧

实行三快准则（响应快、上门快、维修快）；
丰富细致的技术支持服务，备有充裕的配件。
为客户所想，为客户所急，全面为客户提供专业化的服务
售前细心专业设计，售中精心专业制造，售后用心专业服务。

Excellent after-sale service

We provide excellent after sale service for my machine with fast response and professional maintenance, training and technical support.

技术保障

Technical support

作为国内食品冷冻干燥技术最有经验的设计商和制造商之一，公司首台100M2FD设备于1997年已投入市场运行。并具有可靠的设备运行记录。

2003年，国内单台最大面积的FD280M2食品冻干设备率先投入市场。

2010年，首创外置多冷阱交替工作模式的冻干机投放市场。

最新的进展，作为【中国食品和包装机械工业协会】的特邀单位参与制定了冻干机行业团体标准【T/CFPMA 0017-2021食品真空冻干设备】

通过对冷冻干燥加工过程每个工序的不断推敲和改进，我们可以为食品工厂提供最合理的冷冻干燥设计方案。

As one of the most experienced designer and manufacturer of food freeze drying technology in China, Our first 100m² FD model is put into the market in 1997 and has reliable run record. And the largest domestic single 280m² FD food freeze dryer is used by our client in 2003. And the first pioneering external multiple cold trap with altering working model is pushed to the market in 2010;

As one of specially invited unit from China Food and Packing Machinery Industry Association, we participate in the group standard draft of freeze dryer industry (T/CFPMA 0017-2021 vacuum freeze drying equipment for food)

With continuous refinement and improvement on each working procedure of freeze drying, we are able to provide the most suitable design solution for the freeze drying of food industry.

